

# For Lease

# APPIAN



Immediate Occupancy Available  
Office Space  
2730 W. Virginia Pkwy #100  
McKinney, TX 75070

**2730 W. Virginia Parkway #100  
McKinney, TX 75070**

**Available SF: 3,076 SF Office Space**

**For Lease: \$21 SF NNN**

**Lease Type: NNN**

**NNN Estimate: \$8.50 SF**

## Location:

2730 W. Virginia is located appx. one mile west of the US 75 and Virginia Pkwy. Inter-change, and at the NEC of Virginia and Jordan Rd. Centrally located in the heart of McKinney, this office space offers easy access to major thoroughfares in a high traffic area.

## Market:

McKinney Texas has been recognized as one of the fastest growing cities in the United States with a population of over 100,000. McKinney features several master planned communities including Stonebridge Ranch, Eldorado, and Craig Ranch which continue to fuel McKinney's strong growth and demographics.



# APPIAN

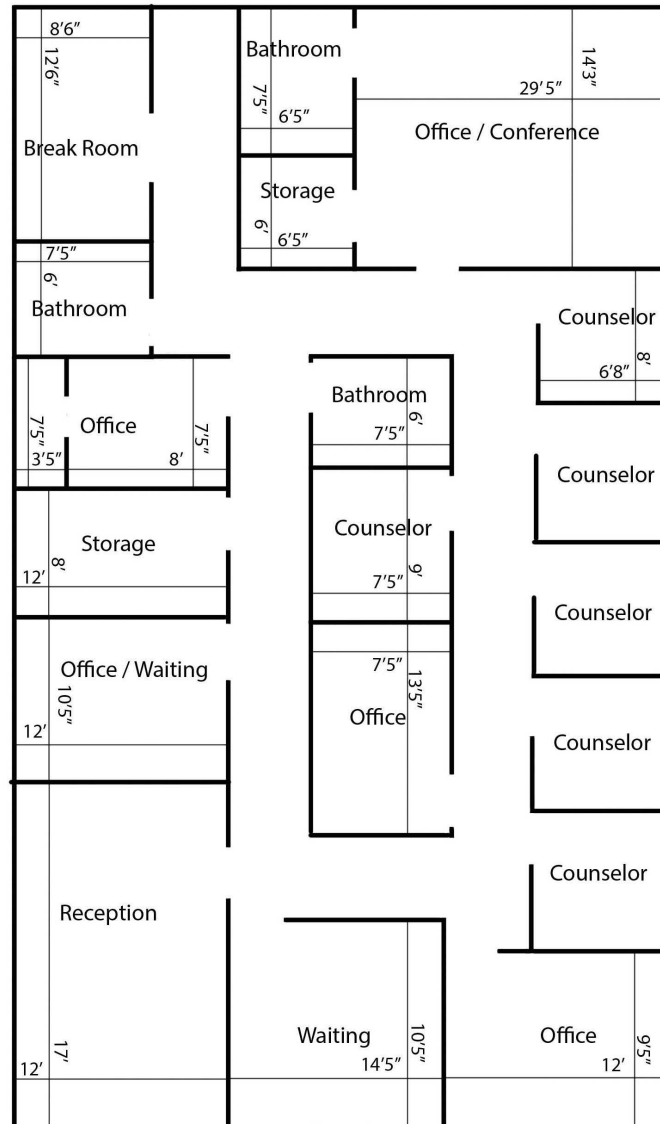
Ray Eckenrode, SIOR, CCIM  
Office: 972-562-9988  
[www.AppianCommercial.com](http://www.AppianCommercial.com)

The information contained herein was obtained from sources believed to be reliable. It is subject to verification by the purchaser. The sale offering is made subject to errors, omissions, change of price, prior sale, or withdrawal. In accordance with the law, this property is offered without respect to race, color, creed, sex, national origin, physical limitations, or familial status. Sub-agency is not recognized.

# 2730 W. Virginia Parkway, McKinney, TX

Suite 100

3,076 SF



The information contained herein was obtained from sources believed to be reliable. It is subject to verification by the purchaser. The sale offering is made subject to errors, omissions, change of price, prior sale, or withdrawal. In accordance with the law, this property is offered without respect to race, color, creed, sex, national origin, physical limitations, or familial status. Sub-agency is not recognized.